

Coaxial Frequency Mixer

ZEM-4300+

Level 7 (LO Power +7 dBm) 300 to 4300 MHz

Maximum Ratings

Operating Temperature	-55°C to 100°C
Storage Temperature	-55°C to 100°C
RF Power	50mW
IF Current	40mA

Permanent damage may occur if any of these limits are exceeded.

Coaxial Connections

LO	2
RF	1
IF	3

Features

- low conversion loss, 6.65 dB typ.
- broadband, 300 to 4300 MHz
- IF response to DC

Applications

- UHF/VHF
- MMDS
- ISM/GPS
- instrumentation



CASE STYLE: V37

Connectors	Model
SMA	ZEM-4300+

+RoHS Compliant

The +Suffix identifies RoHS Compliance. See our web site for RoHS Compliance methodologies and qualifications

Electrical Specifications

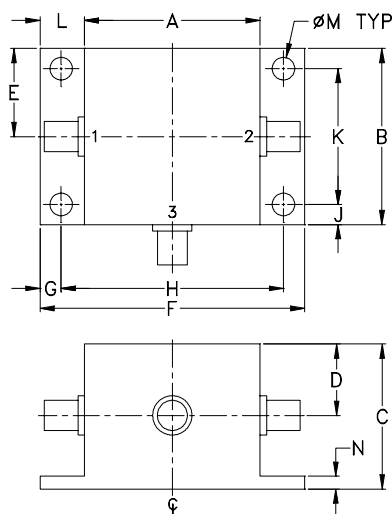
FREQUENCY (MHz)	CONVERSION LOSS (dB)	LO-RF ISOLATION (dB)				LO-IF ISOLATION (dB)				
		Mid-Band		Total Range Max.		L		U		
LO/RF f_L - f_U	IF \bar{X} σ			Typ.	Min.	Typ.	Min.	Typ.	Min.	
300-4300	DC-1000	6.65	0.06	9.5	40	20	30	17	15	8

1 dB COMP.: +1 dBm typ.

L = low range [f_L to 10 f_L]

U = upper range [10 f_U to f_U]

Outline Drawing



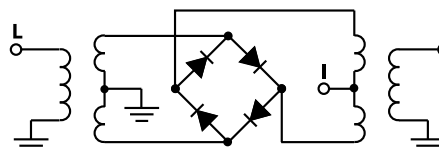
Outline Dimensions (inch/mm)

A	B	C	D	E	F	G
.83	.83	.75	.37	.42	1.25	.10
21.08	21.08	19.05	9.40	10.67	31.75	2.54
H	J	K	L	M	N	wt
1.050	.10	.640	.21	.106	.06	grams
26.67	2.54	16.26	5.33	2.69	1.52	22.0

Typical Performance Data

Frequency (MHz)		Conversion Loss (dB)	Isolation L-R (dB)	Isolation L-I (dB)	VSWR RF Port (:1)	VSWR LO Port (:1)
RF	LO	LO +7dBm	LO +7dBm	LO +7dBm	LO +7dBm	LO +7dBm
300.00	400.00	7.36	51.34	31.66	5.75	4.40
414.29	514.29	6.29	64.83	33.69	3.35	2.89
528.57	428.57	5.08	49.72	36.96	2.55	2.65
757.14	657.14	4.96	41.17	38.13	1.71	2.19
1000.00	900.00	5.45	37.81	30.37	2.55	2.08
1214.29	1114.29	6.11	36.73	26.04	3.13	1.99
1442.86	1342.86	6.61	35.66	22.90	3.50	1.85
1671.43	1571.43	6.86	34.88	19.27	4.13	1.68
1900.00	1800.00	7.03	33.74	17.66	4.48	1.61
2000.00	1900.00	7.13	33.54	17.52	5.06	1.57
2128.57	2028.67	7.43	33.70	17.76	5.38	1.47
2471.43	2371.43	8.04	33.24	18.85	5.56	1.41
2700.00	2000.00	8.34	33.45	19.52	5.51	1.37
2814.29	2714.29	8.52	34.07	19.86	5.27	1.36
3000.00	2900.00	8.85	33.99	19.95	5.77	1.58
3157.14	3057.14	9.03	33.55	19.48	6.97	1.60
3500.00	3400.00	9.22	32.04	18.72	8.72	2.03
3728.57	3628.57	9.04	30.42	18.47	8.23	2.39
4000.00	3900.00	8.91	29.46	20.82	7.47	2.43
4300.00	4200.00	8.41	33.24	24.62	6.26	2.13

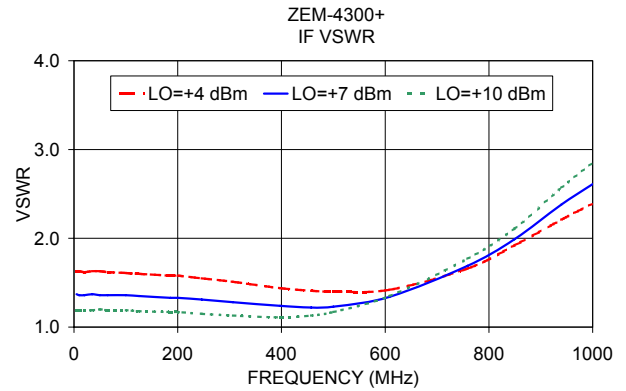
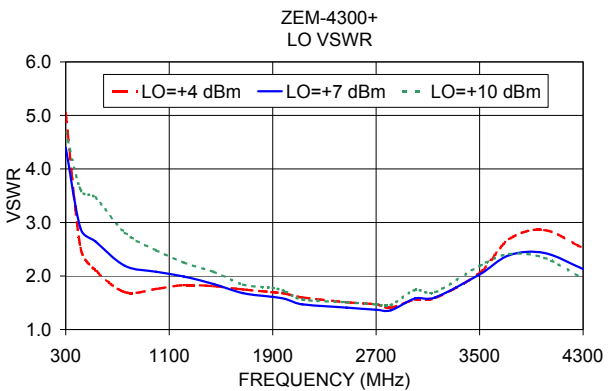
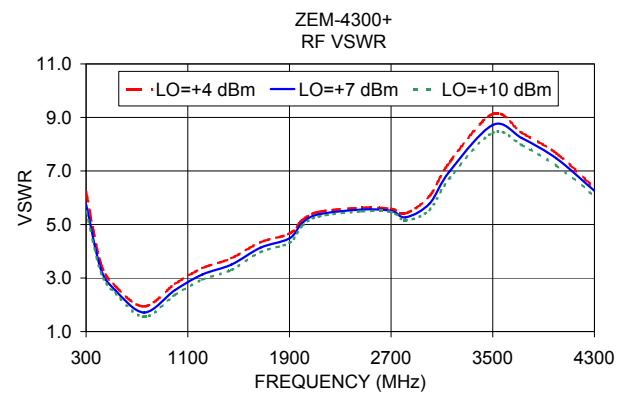
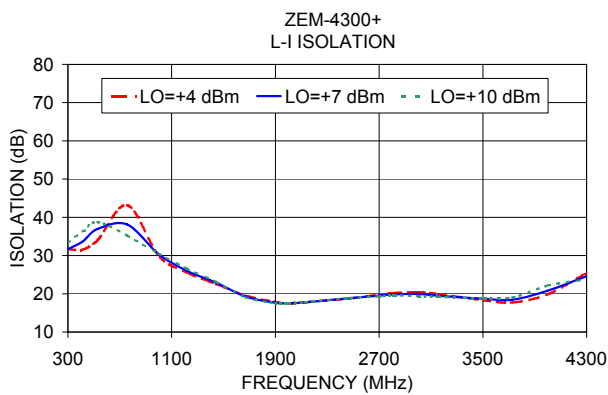
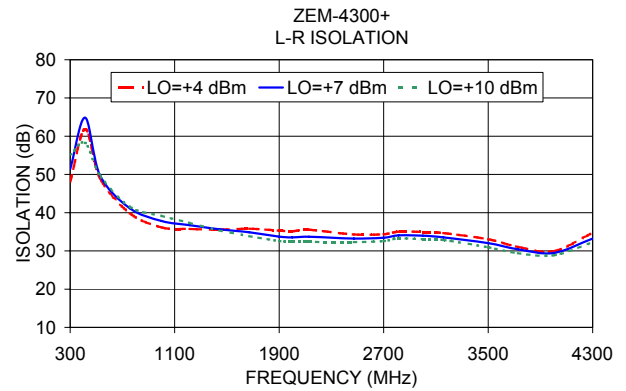
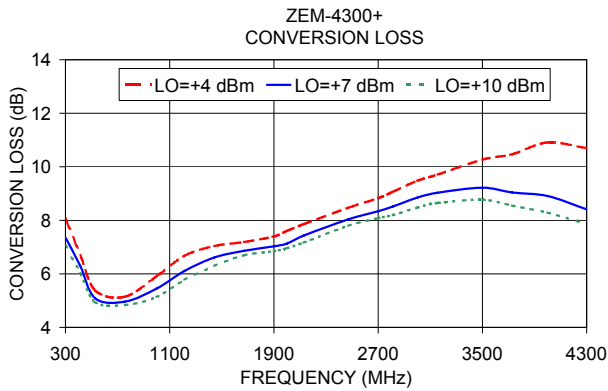
Electrical Schematic



Notes

- A. Performance and quality attributes and conditions not expressly stated in this specification document are intended to be excluded and do not form a part of this specification document.
 B. Electrical specifications and performance data contained in this specification document are based on Mini-Circuit's applicable established test performance criteria and measurement instructions.
 C. The parts covered by this specification document are subject to Mini-Circuits standard limited warranty and terms and conditions (collectively, "Standard Terms"); Purchasers of this part are entitled to the rights and benefits contained therein. For a full statement of the Standard Terms and the exclusive rights and remedies thereunder, please visit Mini-Circuits' website at www.minicircuits.com/MCLStore/terms.jsp





Notes

- A. Performance and quality attributes and conditions not expressly stated in this specification document are intended to be excluded and do not form a part of this specification document.
- B. Electrical specifications and performance data contained in this specification document are based on Mini-Circuit's applicable established test performance criteria and measurement instructions.
- C. The parts covered by this specification document are subject to Mini-Circuits standard limited warranty and terms and conditions (collectively, "Standard Terms"); Purchasers of this part are entitled to the rights and benefits contained therein. For a full statement of the Standard Terms and the exclusive rights and remedies thereunder, please visit Mini-Circuits' website at www.minicircuits.com/MCLStore/terms.jsp

